

MAP PREPARED BY
MONTGOMERY COUNTY
 Real Property Tax Service Agency
 Christine DePasquale, Director

Revision Table					
Date	Made by	Changes Made	Date	Made by	Changes Made
10/20/2022	MB	2023 UPDATES			

SPECIAL DISTRICTS	
PIRG:	F0007 Minden Fire
SCHOOL:	273001 Fort Plain Central
SEWER:	09001 Mont cnty sewer 1

PROPERTY LINE	—	PUBLIC RIGHT OF WAY	—
ORIGINAL LOT LINE	—	PRIVATE RIGHT OF WAY	—
DENOTES COMMON OWNER	—	TOWN VILLAGE CITY	—
BLOCK LIMIT	—	RAILROAD	—
SECTION LINE	—	HYDROLOGY	—

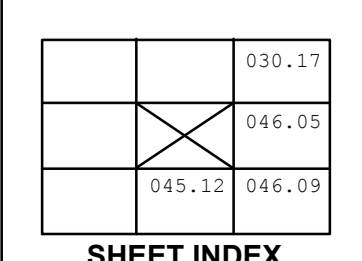
LEGEND	
SCHOOL DISTRICT LINE	—
FIRE DISTRICT	—
AGRICULTURAL DISTRICT	—
MONUMENT LOCATOR	+
COORDINATE LOCATOR	+

CALCULATED ACREAGE	7.5 A (c)
DEED ACREAGE	7.5 A
SCALED DIMENSION	22.5 (s)
DEED DIMENSION	150
TAX MAP BLOCK NUMBER	②

SECT NO. 045.08

TAX MAP
VILLAGE OF FORT PLAIN
 MONTGOMERY COUNTY, NEW YORK
 1 inch = 120 feet

Map Date: Mar 13, 2023



These maps are intended for tax administration only, and not for the conveyance of property.