

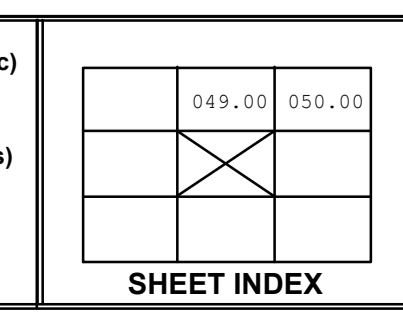
MAP PREPARED BY  
**MONTGOMERY COUNTY**  
 Real Property Tax Service Agency  
 Christine DePasquale, Director

Revision Table					
Date	Made by	Changes Made	Date	Made by	Changes Made
5/15/2024	MB	2023 UPDATES			
10/15/2021	MB	2020 UPDATES			
9/21/2017	CD	2018 UPDATES			
12/3/2014	CD	2015 UPDATES			
1/23/2013	CD	2013 UPDATES			
3/8/2012	CD	2012 UPDATES			
5/6/2009	CD	2010 UPDATES			

SPECIAL DISTRICTS	
AG:	MCAD02 Montg co agrl dist 2
FIRE:	FD002 Mohawk Fire
SCHOOLS:	273289 Fonda-Fultonville 273289 Canajoharie Central

PROPERTY LINE	
ORIGINAL LOT LINE	---
DENOTES COMMON OWNER	---
BLOCK LIMIT	---
SECTION LINE	---
PUBLIC RIGHT OF WAY	
PRIVATE RIGHT OF WAY	---
TOWN VILLAGE CITY	---
RAILROAD	---
HYDROLOGY	---

LEGEND	
SCHOOL DISTRICT LINE	---
FIRE DISTRICT	---
AGRICULTURAL DISTRICT	---
MONUMENT LOCATOR	+
COORDINATE LOCATOR	+
CALCULATED ACREAGE	7.5 A (c)
DEED ACREAGE	7.5 A (s)
SCALED DIMENSION	22.5 (s)
DEED DIMENSION	150
TAX MAP BLOCK NUMBER	2



SECT NO. 065.00  
 These maps are intended for tax administration only, and not for the conveyance of property.  
 Map Date: Mar 13, 2025

TAX MAP  
**TOWN OF MOHAWK**  
 MONTGOMERY COUNTY, NEW YORK  
 1 inch = 400 feet  
 0 100 200 400 600 800 Feet