

468000  
1062000

471000  
1062000

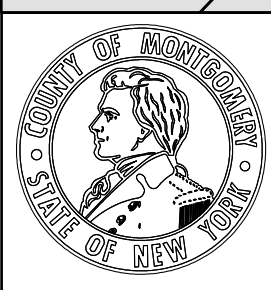
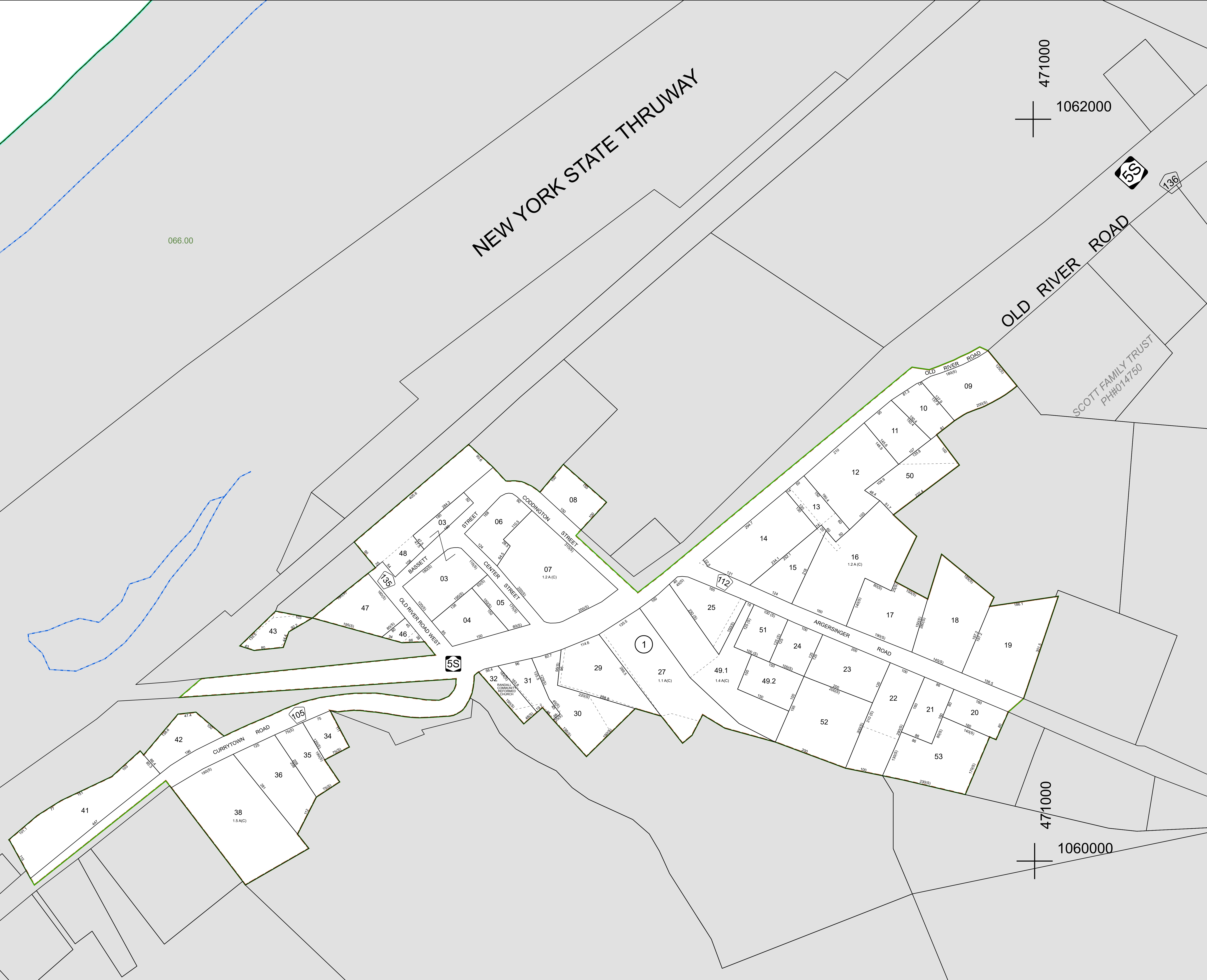
468000  
1060000

471000  
1060000

NEW YORK STATE THRUWAY

OLD RIVER ROAD

SCOTT FAMILY TRUST  
PH#014750



MAP PREPARED BY:  
**MONTGOMERY COUNTY**  
Real Property Tax Service Agency  
Christine DePasquale, Director

REVISION TABLE					
Date	Made by	Changes Made	Date	Made by	Changes Made
12/9/2025	MB	2026 UPDATES	3/15/2017	CD	2017 UPDATES
9/15/2022	MB	2023 UPDATES	1/18/2008	CD	2008 UPDATES
4/7/2021	MB	2022 UPDATES	5/1/2006	CD	2007 UPDATES
1/29/2020	MB	2020 UPDATES	9/1/2005	CD	2006 UPDATES
8/15/2018	CD	2019 UPDATES	4/1/2003	CD	2004 UPDATES

SPECIAL DISTRICTS	
<b>FIRE:</b> FD008 ROOT FIRE	<b>AG:</b> MCAD #3 AGRICULTURAL DISTRICT #3
<b>SCHOOL:</b> 272801 FONDA-FULTONVILLE	

PROPERTY LINE	
ORIGINAL LOT LINE	DENOTES COMMON OWNER
BLOCK LIMIT	SECTION LINE

LEGEND	
SCHOOL DISTRICT LINE	FIRE DISTRICT
AGRICULTURAL DISTRICT	MONUMENT LOCATOR
COORDINATE LOCATOR	

CALCULATED ACREAGE	
DEED ACREAGE	7.5 A (C)
SCALED DIMENSION	7.5 A
DEED DIMENSION	22.5 (S)
TAX MAP BLOCK NUMBER	150
	2

SHEET INDEX			
066.00	066.00	066.00	066.00
066.00	066.00	066.00	066.00

SECT NO. 066.09  
These maps are intended for tax administration only, and not for the conveyance of property.

TAX MAP  
**TOWN OF ROOT**  
MONTGOMERY COUNTY, NEW YORK  
1 inch = 100 feet  
Map Date: Mar 20, 2026