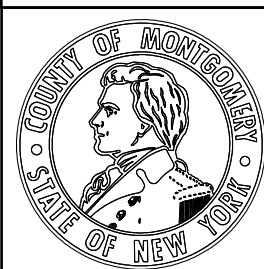
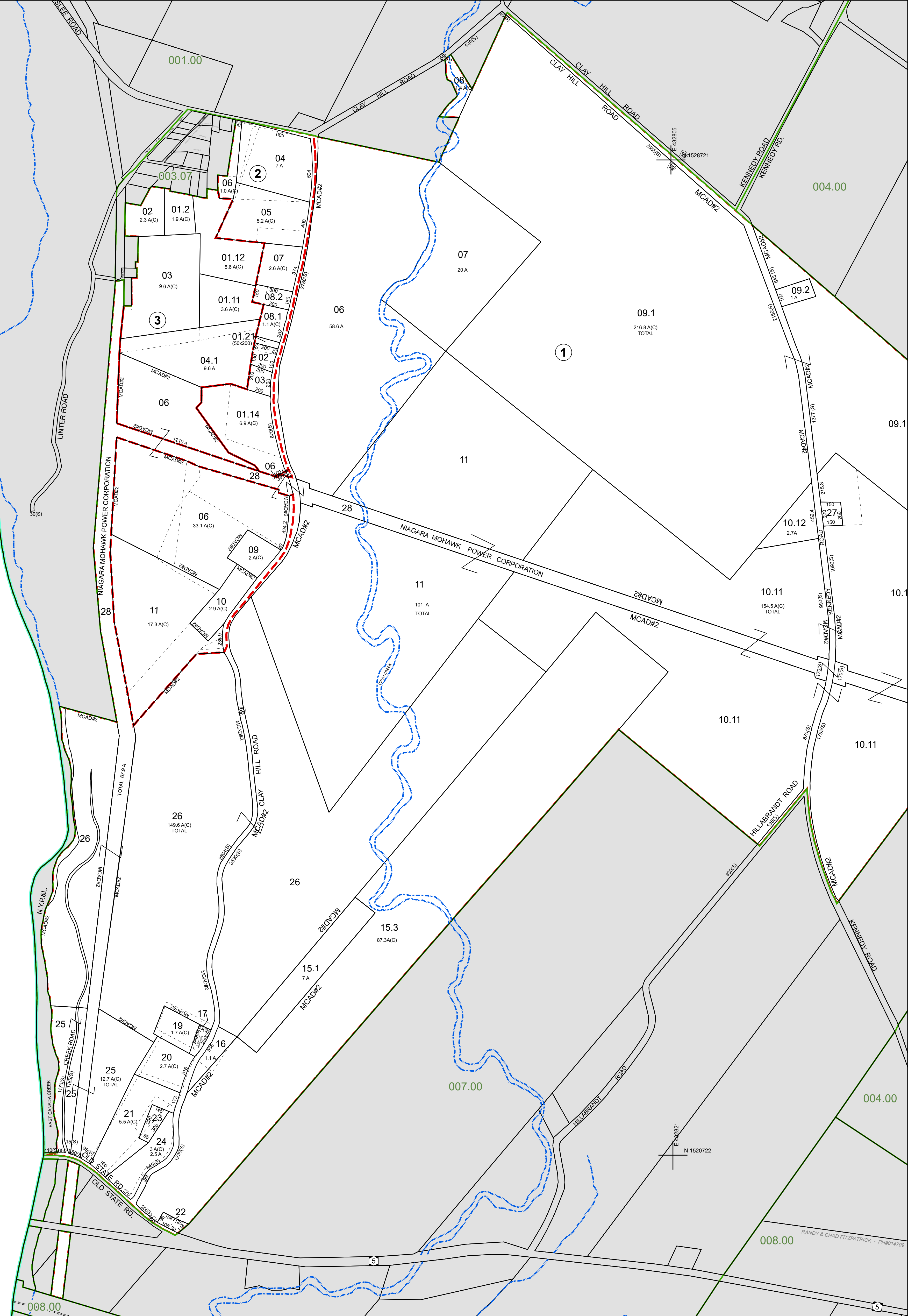


E 420806
N 1528697

E 420822
N 1520698



MAP PREPARED BY:
MONTGOMERY COUNTY
Real Property Tax Service Agency
Christine DePasquale, Director

REVISION TABLE					
Date	Made by	Changes Made	Date	Made by	Changes Made
8/8/2025	MB	2026 UPDATES	2/1/2006	CD	2006 UPDATES
7/14/2015	CD	2016 UPDATES	3/1/2002	PJH	2002 UPDATES
3/13/2013	CD	2013 UPDATES	6/1/2000	PJH	2001 UPDATES
3/16/2010	CD	2010 UPDATES	3/1/2000	PJH	2000 UPDATES
10/5/2007	CD	2008 UPDATES	12/1/1998	PJH	1999 UPDATES

SPECIAL DISTRICTS	
FIRE: FD3005 ST. JOHNSVILLE FIRE	AG: MCAD2 AGRICULTURAL DISTRICT #2
SCHOOL: 273803 Opperheim-Ephratah-St. Johnsville	

PROPERTY LINE		LEGEND	
ORIGINAL LOT LINE	PUBLIC RIGHT OF WAY	SCHOOL DISTRICT LINE	SCH
DENOTES COMMON OWNER	PRIVATE RIGHT OF WAY	FIRE DISTRICT	F
BLOCK LIMIT	TOWN VILLAGE CITY	AGRICULTURAL DISTRICT	MCAD#3
SECTION LINE	RAILROAD	MONUMENT LOCATOR	■
	HYDROLOGY	COORDINATE LOCATOR	+

CALCULATED ACREAGE	7.5 A (C)
DEED ACREAGE	7.5 A
SCALED DIMENSION	22.5 (S)
DEED DIMENSION	150
TAX MAP BLOCK NUMBER	2

SHEET INDEX	
001.00	004.00
007.00	008.00

SECT NO. 003.00

Map Date: Mar 20, 2026

TAX MAP
TOWN ST. JOHNSVILLE
MONTGOMERY COUNTY, NEW YORK
1 inch = 400 feet

0 100 200 400 600 800 Feet