

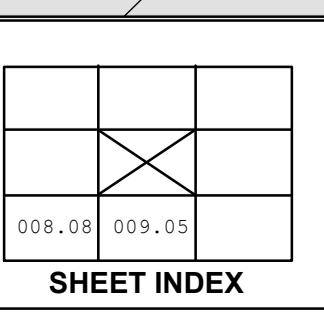
MAP PREPARED BY
MONTGOMERY COUNTY
 Real Property Tax Service Agency
 Christine DePasquale, Director

| Revision Table | | Date | | Date | |
|----------------|---------|--------------|------------|---------|--------------|
| Date | Made by | Changes Made | Date | Made by | Changes Made |
| 4/15/2024 | MB | 2025 UPDATES | 1/16/2014 | CD | 2014 UPDATES |
| 4/19/2021 | MB | 2022 UPDATES | 4/10/2012 | CD | 2013 UPDATES |
| 4/19/2021 | MB | 2022 UPDATES | 10/18/2011 | CD | 2012 UPDATES |
| 9/18/2018 | CD | 2019 UPDATES | 1/15/2008 | CD | 2008 UPDATES |
| 2/7/2017 | CD | 2017 UPDATES | | | |

| SPECIAL DISTRICTS | | |
|-------------------|--------|-----------------------------------|
| AG: | MCAD2 | AGRICULTURAL DISTRICT #2 |
| FIRE: | FD005 | ST JOHNSTVILLE FIRE |
| SCH001: | 273803 | Oppenheim-Ephratah-St. Johnsville |

| PROPERTY LINE | | PUBLIC RIGHT OF WAY | | LEGEND | |
|----------------------|-----|----------------------|-----|-----------------------|-----|
| ORIGINAL LOT LINE | --- | PRIVATE RIGHT OF WAY | --- | SCHOOL DISTRICT LINE | --- |
| DENOTES COMMON OWNER | --- | TOWN VILLAGE CITY | --- | FIRE DISTRICT | --- |
| BLOCK LIMIT | --- | RAILROAD | --- | AGRICULTURAL DISTRICT | --- |
| SECTION LINE | --- | HYDROLOGY | --- | MONUMENT LOCATOR | --- |
| | | | | COORDINATE LOCATOR | --- |

| CALCULATED ACREAGE | |
|----------------------|-----------|
| DEED ACREAGE | 7.5 A (c) |
| SCALED DIMENSION | 7.5 A |
| DEED DIMENSION | 22.5 (s) |
| TAX MAP BLOCK NUMBER | 150 |
| | 2 |



SECT NO. 005.17
 These maps are intended for tax administration only, and not for the conveyance of property.
 Map Date: Mar 14, 2025

TAX MAP
 VILLAGE OF ST. JOHNSTVILLE
 MONTGOMERY COUNTY, NEW YORK
 1 inch = 100 feet
 0 25 50 100 150 200 Feet